



EN



**ARJES**  
**IMPAKTOR** GmbH



# IMPAKTOR 1250D/E HYBRID

**POWERFUL  
SHREDDER**

[www.arjes-impaktor.de](http://www.arjes-impaktor.de)

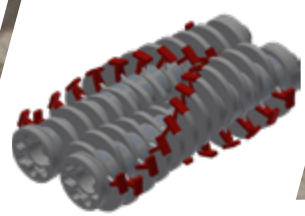
# OUR POWERFUL SHREDDERS



METAL SHAFTS







CONCRETE SHAFTS



PADDEL SHAFTS



## Fields of application IMPAKTOR

-  Metal scrap & car bodies
-  Construction & Demolition Waste
-  Waste Wood & Biomass
-  Rubber and old tires
-  Household & Demolition Waste



# ARJES IMPAKTOR 1250 D/E HYBRID

The Impaktor 1250 is a powerful shredder designed for demanding use in the recycling and shredding industry.

With its particularly robust design and high performance, it is able to efficiently shred a variety of materials, including metal scrap & car bodies, construction & demolition waste, used tires & rubber, domestic & commercial waste, etc.

The Impaktor 1250 is characterized by its user-friendliness and ease of operation, making it an ideal solution for companies and organizations that value efficient and sustainable recycling.

With its focus on environmental friendliness and sustainability, the Impaktor 1250 offers an efficient and reliable solution for processing and recycling materials.

## THROUGHPUT RATES\*

Construction waste	Ø 180 – 200 t/h
Concrete / Asphalt	Ø 140 – 160 t/h
Waste wood	Ø 100 - 150 t/h
Biomass	Ø 150 - 200 t/h
Waste & Plastics	Ø 40 – 50 t/h
Car bodies	Ø 25 – 30 t/h
Mixed scrap	Ø 25 – 30 t/h

\*Depends on the equipment of the shredder, the shaft configuration and the optimum material feed. The performance data given are average values without guarantee!

# IMPAKTOR 1250 D/E *Maximum performance, unmatched versatility*

## HIGH INPUT FUNNEL

One-piece side walls that are hydraulically damped and give way if the material is too coarse. Can be **changed without tools**

## SHREDDING UNIT

Large-volume hopper and two shaft system with **quick change cassette**



NEW



## CONTROL

Newly developed control and display for even more efficiency and user-friendliness. Display of error messages, pressures and performance data.



## TRACK SYSTEM

**Included!** Guaranteed high mobility on uneven surfaces



## CONVEYOR SYSTEM

Easy to dismantle by attaching and detaching. Optionally with vibrating chute plus discharge belt or with belt table with ascending belt

## CHOPPING MILL

height-adjustable. The large distance between the chipper and conveyor system prevents blockages.

## DRIVE UNIT

Can be changed easily by simply unhooking and hooking in. Separate transportation is also possible.

87 dba

NEW



## COVERING HOOD

Ideal accessibility to the drive unit thanks to hydraulic opening of the hood for service, maintenance and cleaning work. Extremely quiet (87 dba) thanks to newly developed intake system.



NEW



## ELECTRIC MOTOR

**Included!** With frequency inverter at **no extra cost.** 2x250kW  
+ 20kW Doosan motor for maneuvering the machine



NEW



## DRIVE

Powerful **diesel engine**. The drive unit is replaceable



## TECHNICAL DATA

### DIMENSIONS

Version	Track system
Length (mm)	7.600 (Transport)
Width (mm)	3.000 (Transport)
Height (mm)	3.400 (Transport)
Weight (kg)	37.000 / 33.000 (Transport)

### DRIVE

	EU	ELECTRO
--	----	---------

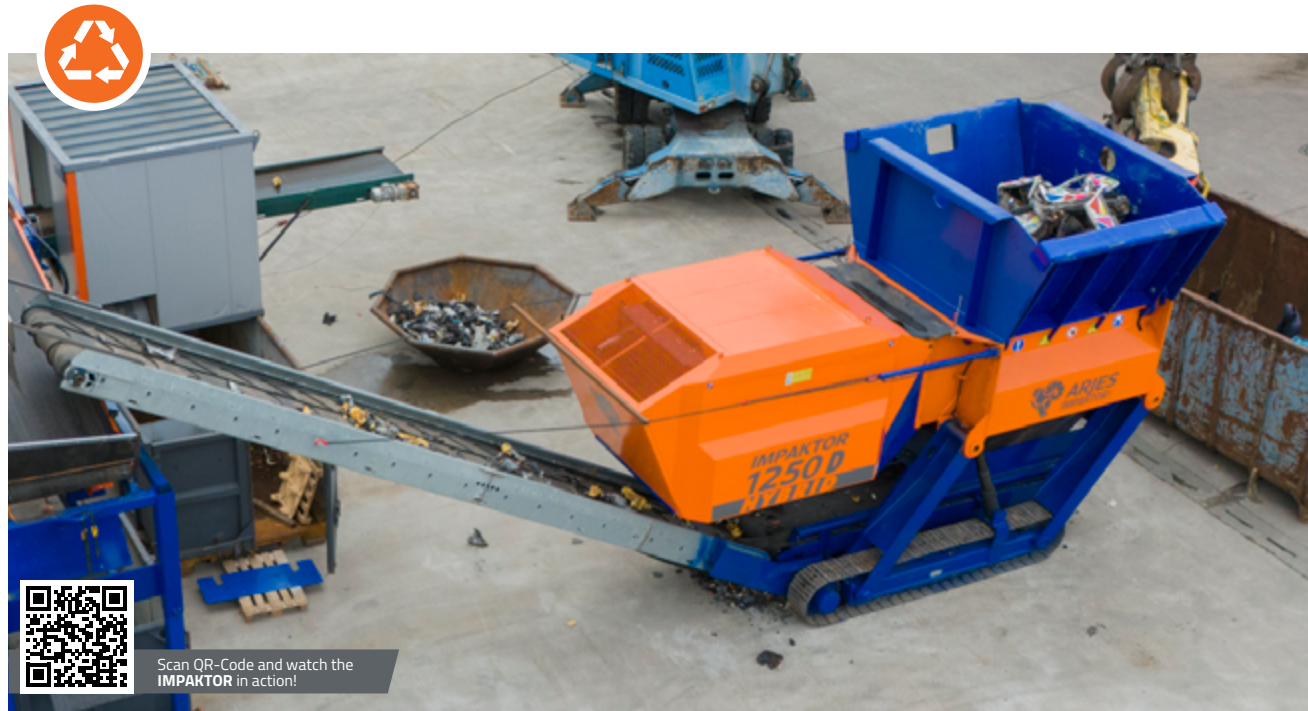
Engine	CAT C13	asyncon 2-polig 2x250KW 1.500U/min
Emission standard	EU Stufe V	
Power (kW / HP)	400 / 544	500kW
Fuel capacity (l)	1.500	
Gearbox	Bonfiglioli	Bonfiglioli

### DISCHARGE BELT

Discharge height (mm)	variable
Width (mm)	1.400

### SHREDDING UNIT

Hopper volume (m <sup>3</sup> )	5
Shaft length (mm)	2.500
Shaft diameter (mm)	860
Weight (kg /cassette)	7.000
Rotation speed (U / min)	15 - 45

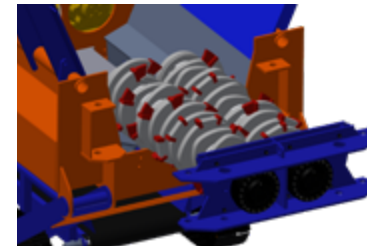


Scan QR-Code and watch the IMPAKTOR in action!



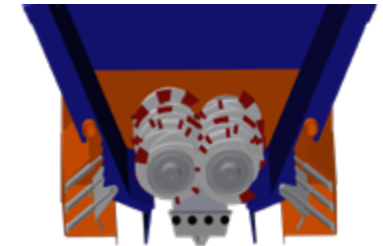
### Reduced transport and working height

Good loading options thanks to the easy dismantling of the hopper walls (without tools), the discharge belt and the transport position of the chipping device.



### Revised quick-change cassette

Easy installation and removal of the shaft pair within a very short time, easy maintenance, reconditioning and changing of the shaft type for uninterrupted operation.



### Hydraulically dampened counter rakes

Hydraulically dampened side walls made from one piece enable very good material sliding properties and thus counteract material blockages.



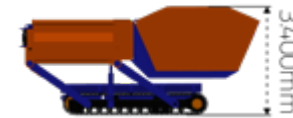


Scan QR-Code and watch the IMPAKTOR in action!



### Comfortable working height

Hydrally adjustable working height. Large distance (1,750 mm) between chipper and conveyor system (belt table or vibrating chute - optional) to prevent the conveyor belt from clogging.



### Transport position

The low transport position (3,400 mm) can be adjusted using hydraulic cylinders for easy movement.



### Service position

The entire hood can be opened hydraulically, providing easy access to the driveline for service, maintenance and cleaning work. If necessary, the entire hood can be easily unhooked.







**ARJES**  
**IMPAKTOR**  
GmbH

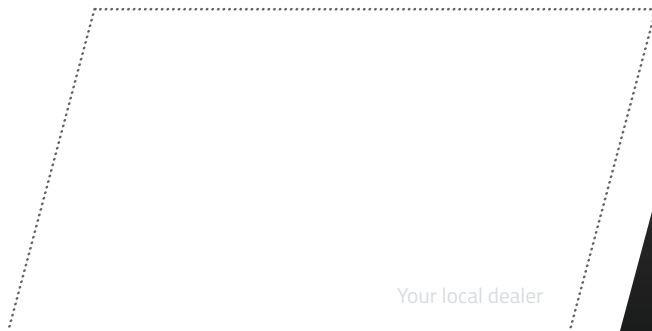
**ARJES IMPAKTOR GmbH**

Werkplatz 2

D-36433 Leimbach

✉ [info@arjes-impaktor.de](mailto:info@arjes-impaktor.de)

🌐 [www.arjes-impaktor.de](http://www.arjes-impaktor.de)



Your local dealer

Disclaimer: We reserve the right to make technical changes, misprints and errors. All specifications refer to the standard version without optional features. Status: July 2024



## 5 CONVINCING ARGUMENTS FOR OUR SUCCESSFUL MODEL

- 1 Best price-performance ratio in its class**  
incl. standard add-on parts (e.g. electric drivetrain and much more)
- 2 Largest range of applications**  
Processing of many types of material with the toughest requirements (such as scrap metal & car bodies, construction & demolition waste, waste wood, used tires etc.)
- 3 Revolutionary shaft quick-change system**  
Shortens maintenance times, refurbishment and changing different shaft types for uninterrupted operation
- 4 Maximum mobility in every situation**  
Track system as standard
- 5 Innovative plug-and-play control**  
Predefined shredding programs that control rotation and speed of shafts for user-friendly operability